

2022 AD1 (Short Option)

Summary:

Total Distance: 131 mi
Routing Mode: Along-Road
Transportation Method: Motorcycle
Total Moving Time: 4 h, 13 min
Total Time: 4 h, 13 min
Course: 248° true
Number of Directions: 83

2022 AD1

	Directions	Distanc	Heading	Time	Total	Total Time
●	Start at 1067 Hwy2461				0 ft	0 seconds
↑	Get on Ga-246 and ride west	0 ft	239° true	0 seconds	0 ft	0 seconds
↑	Continue towards Hospital	1.0 mi	253° true	2 minutes	1.0 mi	2 minutes
↶	Turn left onto US-23	131 ft	260° tr...	1 minutes	1.0 mi	2 minutes
●	Arrive at US-23 and Road1	48 ft	148° true	1 minutes	1.0 mi	3 minutes
↷	Turn right onto Wolffork Rd	1.3 mi	191° true	5 minutes	2.3 mi	5 minutes
●	Arrive at 8942 Wolffork Rd1	128 ft	90° true	1 minutes	2.4 mi	5 minutes
↑	Get on Wolffork Rd and ride west	0 ft	270° true	3 minutes	2.4 mi	5 minutes
↷	Turn right onto Wolf Fork Rd	0.7 mi	211° true	2 minutes	3.1 mi	7 minutes
●	Arrive at 6740 Us4411	94 ft	159° true	1 minutes	3.1 mi	7 minutes
↑	Get on Wolf Fork Rd and ride west	1 ft	339° tr...	2 minutes	3.1 mi	7 minutes
↶	Turn left onto Wolf Fork Rd	2.2 mi	234° tr...	4 minutes	5.3 mi	11 minutes
↷	Turn right onto Blue Ridge Gap Rd	1.2 mi	250° true	2 minutes	6.5 mi	12 minutes
●	Arrive at 6078 Wolf Fork Rd1	417 ft	270° true	1 minutes	6.6 mi	13 minutes
↑	Get on Blue Ridge Gap Rd and ride southwest	0 ft	90° true	7 minutes	6.6 mi	13 minutes
↶	Turn left onto Persimmon Creek Rd	4.5 mi	240° true	7 minutes	11.0 mi	20 minutes
●	Arrive at 1489 Persimmon Creek Rd1	57 ft	51° true	1 minutes	11.0 mi	20 minutes
↑	Get on Persimmon Creek Rd and ride southwest	0 ft	231° true	8 minutes	11.0 mi	20 minutes
↶	Turn left onto Persimmon Rd	1.4 mi	206° tr...	3 minutes	12.5 mi	23 minutes
↷	Keep right onto Persimmon Rd	1.5 mi	185° true	3 minutes	14.0 mi	25 minutes
↷	Turn right onto US-76	0.7 mi	204° tr...	2 minutes	14.7 mi	26 minutes
●	Arrive at 354 Persimmon Rd1	19 ft	121° true	1 minutes	14.7 mi	27 minutes

2022 AD1

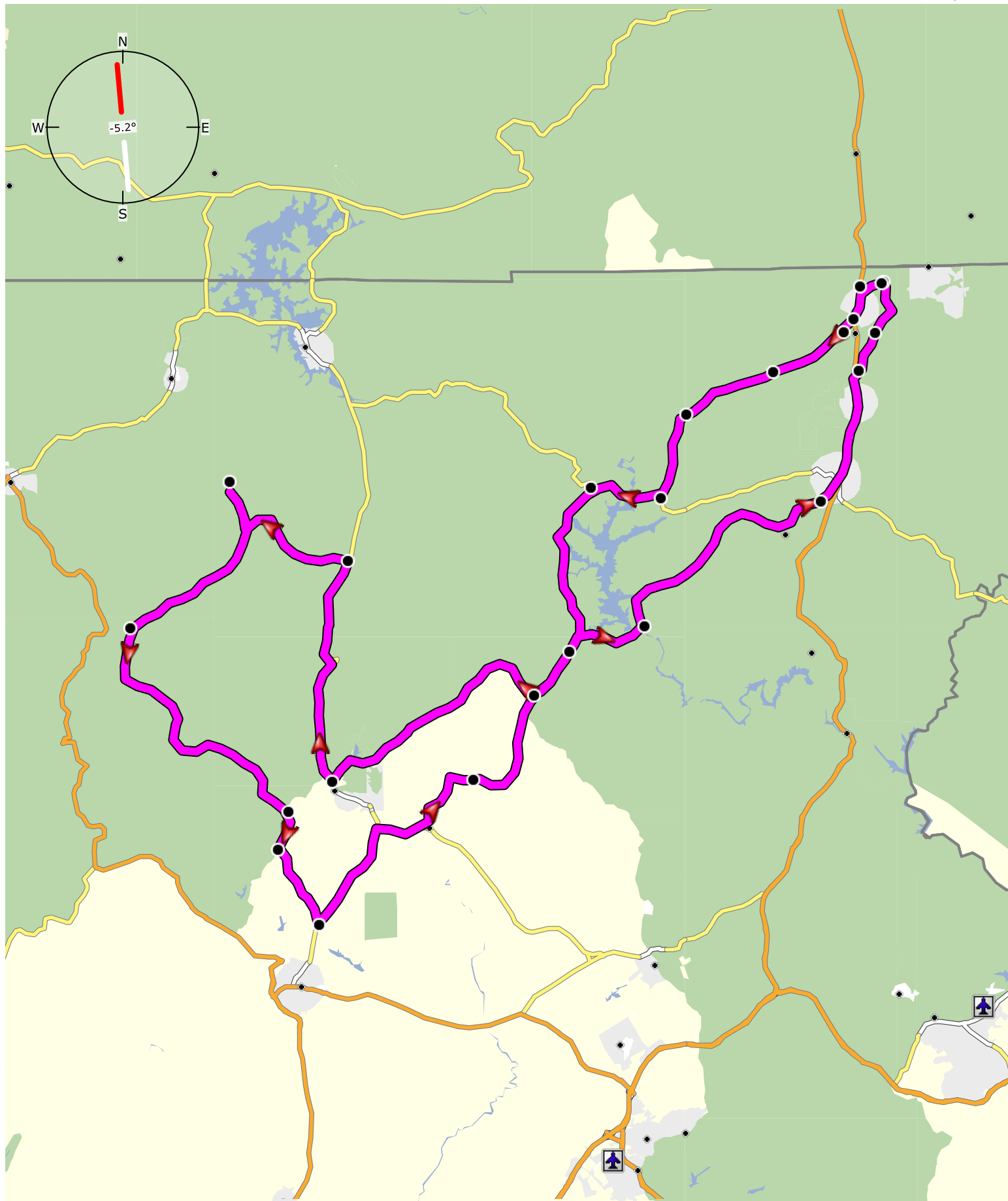
	Directions	Distanc	Heading	Time	Total	Total Time
	Get on US-76 and ride northwest	0 ft	301° true	7 minutes	14.7 mi	27 minutes
	Turn left onto Ga-197	3.0 mi	284° tr...	4 minutes	17.7 mi	31 minutes
•	Arrive at US-7621	203 ft	324° true	2 minutes	17.8 mi	32 minutes
	Get on Ga-197 and ride southwest	0 ft	144° true	6 minutes	17.8 mi	32 minutes
	Continue towards Hospital	8.3 mi	214° true	19 minutes	26.1 mi	51 minutes
•	Arrive at 14414 N Ga-197	0.9 mi	115° true	2 minutes	26.9 mi	53 minutes
	Get on N Ga-197 and ride southwest	1 ft	295° tr...	21 minutes	26.9 mi	53 minutes
	Turn right towards Helen	2.2 mi	228° true	4 minutes	29.2 mi	56 minutes
•	Arrive at 11896 N Ga-1971	406 ft	206° tr...	1 minutes	29.3 mi	57 minutes
	Get on Ga-356 and ride west	0 ft	26° true	4 minutes	29.3 mi	57 minutes
	Bear left onto Unicoi Bottoms Rd	8.7 mi	285° tr...	14 minutes	38.0 mi	1 hour(s), 10 minutes
	Turn left onto Ga-356	1.0 mi	281° true	2 minutes	38.9 mi	1 hour(s), 11 minutes
	Turn right towards Hiawassee	1.1 mi	212° true	3 minutes	40.0 mi	1 hour(s), 14 minutes
•	Arrive at Ga-17 and Curtis Rd	156 ft	0° true	1 minutes	40.1 mi	1 hour(s), 15 minutes
	Continue towards Hiawassee	0.3 mi	318° true	19 minutes	40.4 mi	1 hour(s), 15 minutes
	Turn left onto Ga-17	5.0 mi	23° true	9 minutes	45.4 mi	1 hour(s), 23 minutes
	Turn left onto Ga-17	4.3 mi	17° true	14 minutes	49.7 mi	1 hour(s), 36 minutes
	Turn left onto Ga-180	1.1 mi	17° true	2 minutes	50.8 mi	1 hour(s), 38 minutes
•	Arrive at Ga-171	63 ft	0° true	2 minutes	50.8 mi	1 hour(s), 39 minutes
	Get on Ga-180 and ride west	1 ft	180° true	25 minutes	50.8 mi	1 hour(s), 39 minutes
	Turn right onto Ga-180-Spur	5.3 mi	294° tr...	7 minutes	56.1 mi	1 hour(s), 46 minutes
	Turn right onto Ga-180-Spur	160 ft	290° tr...	1 minutes	56.1 mi	1 hour(s), 47 minutes

2022 AD1

	Directions	Distanc	Heading	Time	Total	Total Time
●	Arrive at Ga-180-Spur1	3.1 mi	280° tr...	5 minutes	59.2 mi	1 hour(s), 51 minutes
↑	Get on Ga-180-Spur and ride south	0 ft	100° true	13 minutes	59.2 mi	1 hour(s), 51 minutes
↶	Turn left onto Russell Scenic Hwy	9.4 mi	234° tr...	15 minutes	68.6 mi	2 hour(s), 5 minutes
●	Arrive at Russell Scenic Hwy and Ga-1801	18 ft	270° true	1 minutes	68.6 mi	2 hour(s), 6 minutes
↑	Get on Russell Scenic Hwy and ride south	0 ft	90° true	15 minutes	68.6 mi	2 hour(s), 6 minutes
↷	Turn right towards Cleveland	14.0 mi	110° true	44 minutes	82.6 mi	2 hour(s), 49 minutes
●	Arrive at 5572 Hwy75-Alt1	54 ft	73° true	1 minutes	82.6 mi	2 hour(s), 50 minutes
↑	Get on Ga-75-Alt and ride south	0 ft	253° true	44 minutes	82.6 mi	2 hour(s), 50 minutes
↶	Turn left onto Asbestos Rd	1.6 mi	207° true	3 minutes	84.2 mi	2 hour(s), 52 minutes
●	Arrive at Ga-75-Alt and Asbestos Rd1	17 ft	219° true	1 minutes	84.2 mi	2 hour(s), 53 minutes
↑	Get on Asbestos Rd and ride southeast	0 ft	39° true	4 minutes	84.2 mi	2 hour(s), 53 minutes
↶	Turn left onto Ga-75	3.6 mi	173° true	6 minutes	87.8 mi	2 hour(s), 59 minutes
●	Arrive at Ga-751	35 ft	122° true	2 minutes	87.8 mi	3 hour(s), 0 minutes
↑	Get on Ga-75 and ride northeast	1 ft	302° tr...	8 minutes	87.8 mi	3 hour(s), 0 minutes
↷	Turn right towards Clarkesville/Sautee	4.5 mi	19° true	5 minutes	92.4 mi	3 hour(s), 5 minutes
↶	Turn left onto Garland Bristol Rd	1.9 mi	67° true	3 minutes	94.3 mi	3 hour(s), 8 minutes
↶	Turn left onto Ga-255	0.4 mi	50° true	2 minutes	94.7 mi	3 hour(s), 9 minutes
●	Arrive at 3408 Hwy2551	3.1 mi	9° true	6 minutes	97.8 mi	3 hour(s), 15 minutes
↑	Get on Ga-255 and ride east	1 ft	189° true	15 minutes	97.8 mi	3 hour(s), 15 minutes
↑	Continue towards Lake Burton/Clayton	4.3 mi	28° true	5 minutes	102 mi	3 hour(s), 20 minutes
↶	Turn left onto N Ga-197	65 ft	44° true	1 minutes	102 mi	3 hour(s), 20 minutes
↷	Turn right onto Burton Dam Rd	3.9 mi	28° true	8 minutes	106 mi	3 hour(s), 27 minutes

2022 AD1

	Directions	Distanc	Heading	Time	Total	Total Time
	Turn left onto Bridge Creek Rd	2.9 mi	51° true	5 minutes	109 mi	3 hour(s), 32 minutes
•	Arrive at Seed Lake Rd and Bridge Creek Rd and Burton Dam	17 ft	83° true	1 minutes	109 mi	3 hour(s), 32 minutes
	Get on Bridge Creek Rd and ride north	1 ft	263° tr...	18 minutes	109 mi	3 hour(s), 32 minutes
	Turn right onto Bridge Creek Rd	3.5 mi	12° true	6 minutes	112 mi	3 hour(s), 38 minutes
	Turn left onto Old Cleveland Rd	5.8 mi	100° true	12 minutes	118 mi	3 hour(s), 50 minutes
•	Arrive at 1163 Old Ga-4411	2.1 mi	151° true	4 minutes	120 mi	3 hour(s), 54 minutes
	Get on Old Ga-441 and ride east	1 ft	331° true	22 minutes	120 mi	3 hour(s), 54 minutes
	Keep right onto Mill St	1.0 mi	38° true	3 minutes	121 mi	3 hour(s), 56 minutes
	Turn right onto E Savannah St	0.2 mi	4° true	1 minutes	122 mi	3 hour(s), 57 minutes
	Turn left onto US-23	0.2 mi	97° true	1 minutes	122 mi	3 hour(s), 58 minutes
	Turn right onto Yorkhouse Rd	4.2 mi	358° tr...	7 minutes	126 mi	4 hour(s), 4 minutes
•	Arrive at 166 Yorkhouse Rd	0.3 mi	39° true	1 minutes	126 mi	4 hour(s), 5 minutes
	Get on Yorkhouse Rd and ride northeast	0 ft	219° true	11 minutes	126 mi	4 hour(s), 5 minutes
	Turn right onto Kellys Creek Rd	1.6 mi	18° true	3 minutes	128 mi	4 hour(s), 7 minutes
•	Arrive at Mountain Ridge Dr1	0.2 mi	127° true	1 minutes	128 mi	4 hour(s), 8 minutes
	Get on Kellys Creek Rd and ride northeast	2 ft	307° true	4 minutes	128 mi	4 hour(s), 8 minutes
	Arrive at 2696 Kellys Creek Rd31	2.6 mi	83° true	6 minutes	131 mi	4 hour(s), 13 minutes



City Navigator North America NT 2022.1

Use of the Map Data is subject to certain restrictions and/or requirements imposed by third party suppliers and/or governmental or regulatory authorities as further set forth at <https://>

0 5 10 15 mi

N34° 28.619' W83° 17.057'

2022 AD1

